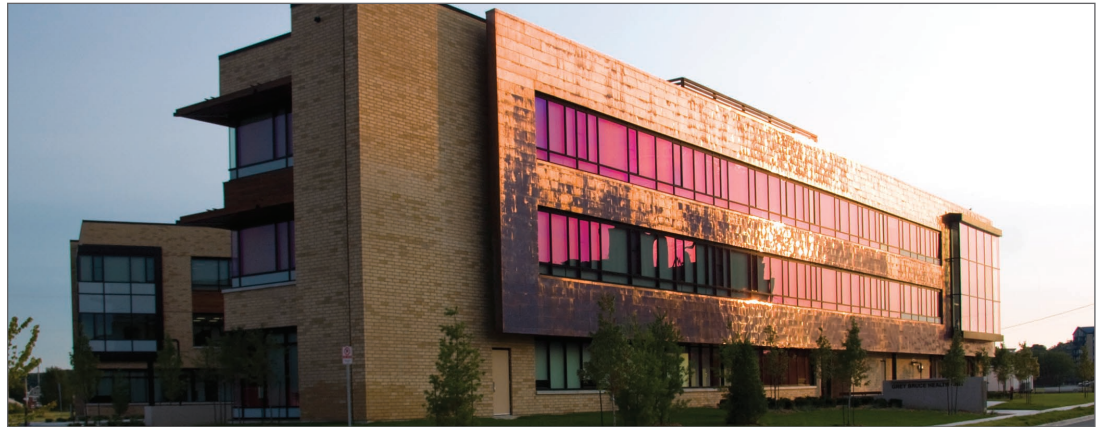




## Grey Bruce Health Unit

**A commitment to sustainable community well-being**

Owen Sound, Ontario



The unique “green” design of the Grey Bruce Public Health Unit draws from a vision that takes responsibility for a healthier environment. Design elements using natural and environmentally sustainable materials and systems create a healthy workplace and are an investment in community wellness.

This innovative building sets a new standard for local sustainable

development and acts as a catalyst to encourage future redevelopment along Owen Sound’s heritage waterfront. This three-storey, 5,575 m<sup>2</sup> building was designed and constructed to meet many important green building objectives: leaving a minimal ecological footprint, making efficient use of resources, providing a healthy work environment, and creating an inviting, functional building for visitors.

### Notable Features

- Remediation measures to remove contaminated soils
- Rainwater cistern to supply water for toilet flushing
- Low-flow plumbing fixtures, including dual-flush toilets
- Energy recovery ventilators
- High-efficiency condensing boilers
- Occupancy and daylighting sensors
- Long-term energy monitoring program
- Low off-gassing systems furniture
- exceptional outdoor views and daylighting
- Green education program
- Green housekeeping program

#### Owner:

Board of Health for the Grey Bruce Health Unit

#### Architect:

Salter Pilon Architecture Inc. in association with Lett Architects Inc.

#### Our Services:

- Sustainable Design Facilitation
- Energy Efficiency Consulting
- LEED Consulting & Certification
- Building Commissioning
- Green Education Program Design
- Building Energy Performance Monitoring

#### Status:

LEED®-NC Gold Certified  
Completed 2008

#### LEED® Project Facts

Gross Floor Area: 5575 (m<sup>2</sup>)  
Energy Density: 149 (kWh/m<sup>2</sup>)

Category	% Performance
<b>Water Savings</b>	
Indoor Use	60 %
<b>Energy Savings</b>	
	39 %
<b>Waste Diversion</b>	
	88 %
<b>Recycled Content</b>	
	16 %
<b>Regional Content</b>	
	34 %
<b>Daylighting</b>	
	87 %
<b>Views</b>	
	94 %

LEED® Gold Certified



**39%**  
Energy Savings



**60%**  
Indoor Water Savings



**17%**  
Raw Materials Savings