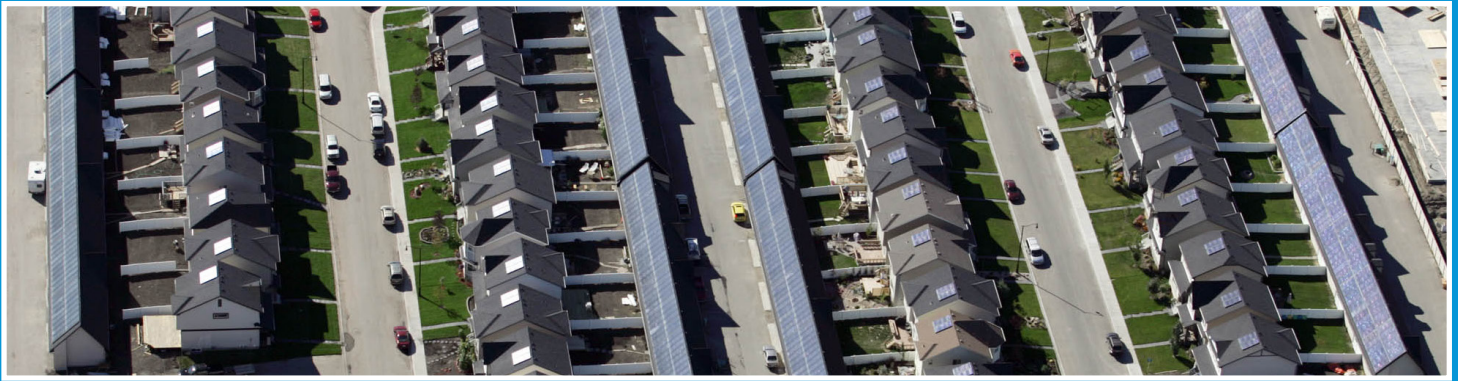


- residential communities
- corporate/government campuses
- post-secondary campuses



## Enermodal Master Plans: The big picture

### The Enermodal Philosophy

In urban planning, sometimes it's hard to see the forest (the community) for the trees (the buildings). Responsible developers go beyond individual buildings to consider how communities are organized, connected, and supplied with water and power.

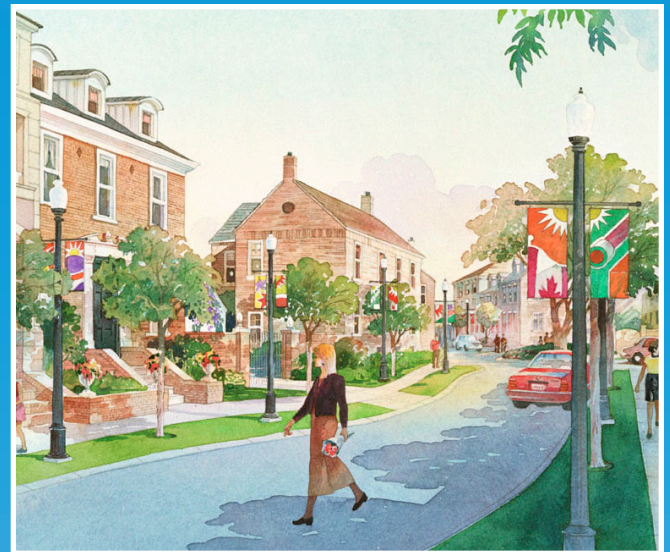
LEED-ND (Neighbourhood Development) and green master plans are two ways Enermodal can help developers realize the complete picture of sustainable communities.

### Featured Projects

**Currie Barracks** (Calgary, Alberta) – The largest LEED-ND Gold certified project in the world, Currie Barracks is a model of a walkable, green community. Nearly all residents within walking distance of mass transit, a school, and open space.

**Drake Landing Solar Community** (Okotoks, Alberta) – Solar energy supplies 90% of the space heating and 60% of the hot water heating for this 52-home subdivision. Enermodal provided the feasibility study, lead mechanical design consulting, project commissioning, construction supervision, and performance monitoring.

**Halton Region Campus** (Burlington, Ontario) – Enermodal developed green building guidelines for this regional government campus. The guidelines outline requirements for energy and water use and performance thresholds for buildings.



Credit: Canada Lands Company

Currie Barracks (Calgary, Alberta)  
LEED-ND Gold certified



Credit: Waterfront Toronto

Waterfront Toronto Redevelopment  
All buildings designed to LEED Gold

